

BTE™ EMPLOYMENT TESTING



844 (BRIOTIX) 274-6849
briotix.com





EMPLOYMENT TESTING

Eliminating unnecessary musculoskeletal claims and expediting return to work through defensible post offer employment testing (POET), functional capacity evaluations (FCE), and Fit For Duty (FFD) testing, using state of the art technology.

ARE YOU PREVENTING YOUR NEXT INJURY?

You face tough questions. "Who can safely and reliably perform which jobs?" "How can I be sure?" The hiring process requires compliance with multiple regulations, so consistently implementing legally defensible testing is critical. And when testing is performed, how can you be sure the data is objective and reliable?

Hire better with Briotix Health. Innovative hardware and software engineered with ISO 9001 and 13845 certified processes makes a difference. So does industry-leading clinical and operational expertise. Backed by the most advanced testing and objective decision support, Briotix Health can help you hire with confidence and reduce injury rates by 50% or more.

YOUR PEOPLE ARE WORTH IT

Join the growing number of employers taking an active role in ensuring that their workers can safely perform their jobs and return to work from injuries more safely. Partner with experts in Post Offer Employment Testing, Functional Capacity Evaluations, and Fit-for-Duty Testing.

MAKE RETURN-TO-WORK EASY

A lot goes into every return to work decision. And the stakes are high. Don't go it alone. We've helped clients like you make thousands of return to work decisions, saving them time and money. Return to Work (RTW) doesn't have to be hard. Decrease your risk, and do RTW the right way - with BTE™ Employment Testing and data support. Reduce your company's lost workdays by 20-40%.



PHYSICAL DEMANDS ANALYSIS (PDA)

Defined, objective measurement of each job's actual physical demands - the first step in preventing injuries and returning employees to safe work.

Briotix Health experts go to your site and measure the demands of targeted tasks for each essential function in the job description. Using smart, calibrated Briotix Health technology and ISO processes. Your employees and supervisors are observed and consulted as subject matter experts, to ensure accurate PDA(s).

We use this data to develop specific test protocols for your POET program. PDA data can also be documented as detailed reports of job functions and the corresponding physical demand requirements and is stored in our secure, web-based data system.

The premium brand in functional evaluation for over 40 years

What's the point of testing if it doesn't accurately and reliably prevent you from hiring your next injury? Other testing providers' subjective methods can only deliver minimal fail rates - leaving you on your own, to gamble on hiring your next injury. This yields poor return on investment and limited injury reduction.

Briotix Health gives you optimal, reliable fail rates because our objective testing is fine-tuned to reliably detect your next injury before it becomes a problem for you. Our network of trained clinical specialists perform your testing consistently, with centralized Briotix Health Admin and QA driving our ISO processes. All your data is captured by our secure web-based system for access and review pre and post hire.

BTE POST OFFER EMPLOYMENT TESTING (POET)

POET helps companies determine if a candidate can handle the physical requirements of the essential job functions. Tailored to the specific needs of your company, utilizing POET testing ensures companies are not hiring their next work-related injury.

What's the point of testing if it doesn't accurately and reliably prevent you from hiring your next injury? Other testing providers' subjective methods can only deliver minimal fail rates - leaving you on your own to gamble on hiring your next injury. This yields poor ROI and limited injury reduction.

Briotix Health gives you optimal, reliable fail rates. Because our objective testing is fine-tuned to reliably detect your next injury - before it becomes a problem for you. Our network of trained clinical specialists perform your testing consistently, with centralized Admin and QA driving our ISO processes. All your data is captured by our secure web-based system for access and review pre and post hire.



BTE **FUNCTIONAL CAPACITY EVALUATION (FCE)**

Partner with Briotix Health and plug your workforce into our network of highly-trained providers utilizing BTE™ Smart Evaluation Equipment. FCEs help companies determine medical treatment authorization, return to work, and apportionment eligibility with objective evaluation data. We manage scheduling, referral placement, and multi-point quality assurance for your entire functional capacity evaluation process.

The BTE™ FCE is an important part of the decision support process. It includes the employer, claims adjusters, physicians,

and therapists – all working together. Relying on objective BTE™ evaluation data to determine medical treatment authorization, return to work, and apportionment eligibility in applicable jurisdictions. The FCE is critical to safe, efficient recovery and return to work.

BTE **FIT-FOR-DUTY TESTING (FFD)**

Functional assessment based on the essential job demands to determine an employee's ability to safely return to work following a work absence.

BTE™ Fit for Duty testing helps you assess and proceed with return to work options for individuals on disability as well as inactive employees. Our Fit-for-Duty programs build on our provider network, Briotix Health onsite services, and research-backed testing platforms and protocols.

BTE™ Fit for Duty also allows a more informed, active role in workplace health and productivity. Baseline your active employees provides insight into their current functioning levels. Then, Briotix Health experts can work with you to develop appropriate wellness programs – cardiac, exercise, and/or strengthening – to help you prevent future issues in an aging or deconditioned workforce.

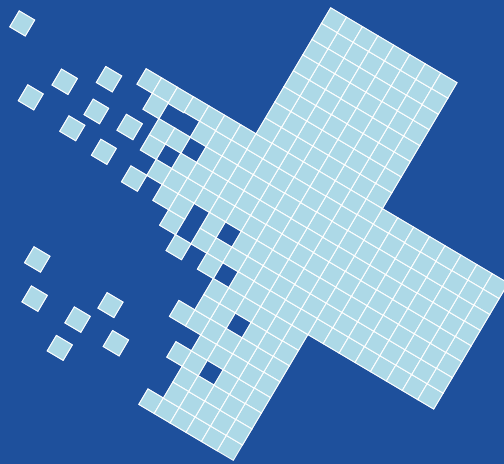
True measurement, unrivaled returns.

Objective, measurable Briotix Health decision support connects the dots for you – linking hiring, prevention, recovery, and return to work. From start to finish, Briotix Health captures and shares critical data through our proprietary web-based decision support system. Partner with us to design the best, smart solution for your strongest return on investment.

There's a reason our clients win awards. Because together, we design the best, most scientific approach to give you optimal results and objective decision support that meets your specific needs. We're here to make you more successful. Draw on our years of clinical research and development, boost your workforce health and productivity and get your best outcomes and ROI with Briotix Health.

**BTE™ Employment Testing from Briotix Health –
Anything Less is Guessing**





CARING FOR YOUR WORKFORCE AND BUILDING A HEALTHIER WORKPLACE

Serving clients throughout the US and
internationally for more than 20 years

CONTACT US TODAY

**844 (BRIOTIX) 274-6849 | briotix.com
info@briotix.com**

West Coast Office
515 Marin Street #318
Thousand Oaks, CA 91360

Headquarters
9000 E. Nichols Avenue #104
Centennial, CO 80112

Midwest Office
285 Forest Grove #207
Pewaukee, WI 53072